

### ***Recommended Use:***

### ***Description:***

*GeoEarth provides the benefits of a nutrient rich compost in a concentrated, dry form. GeoEarth is easy to apply and replenishes the soil with a rich supply of stabilized organic matter and essential nutrients required for quality growth. GeoEarth provides a combination of plant nutrients, beneficial microbiology and organic substances derived from biologically stable aerobic compost.*



### **Biotic Soil Growth Media**

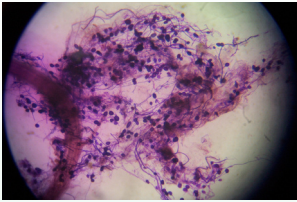
with supercompost, biochar, mycorrhizae, seaweed, proprietary amino acids, and chelated micronutrients

### ***Benefits of GeoEnvironmental GeoEarth:***

- iable replacement for topsoil
- Provides the benefits of compost in a dry, concentrated form, which minimizes transportation and application costs
- Contains primary, secondary and tertiary nutrients for plant growth, eliminating the need to apply additional fertilizer
- Adds 7% approximately humic acid
- Supplies soil with 50% stabilized organic matter
- The Carbon:Nitrogen ratio range of 9:1 ensures no N immobilization in the soil
- Increases the nutrient and water holding capacity of the soil
- Improves and sustains soil quality
- Improves buffering against changes in soil pH
- Increases the soil's cation exchange capacity
- Improves soil structure, porosity and stability leading to greater root development

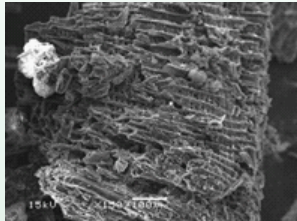
# GEOEARTH™

## Product Specifications



### *Mycorrhizae*

Mycorrhizae work by delivering nutrients from the soil to the plants roots. This results in greatly reduced fertilization needs and increased water availability. Mycorrhizae help to eliminate nitrogen runoff, can take 30% more carbon out of the air and add to the health of plants.



### *Biochar*

Biochar is an enduring carbon substrate that maintains beneficial soil physical, chemical and biological properties. The application of biochar to your soil adds stable carbon to your soil bank account. The addition of biochar to the soil system provides immediate benefits to crop performance and when used as part of an annual program, biochar will provide cumulative benefits, increasing performance of the soil system over time. A biochar application program enables you to use nutrients and water more efficiently without sacrificing productivity.

## *Erosion Control & Remediation*

### *Hydroseeding*

Mix with water solution at a ratio of up to 4 lb. GeoEarth to 1 gallon of water up to 2 tons per 1,000 gallon tank

### *Blanket Application (no incorporation)*

Apply 1000-2000 lb. of GeoEarth on top of soil surface

### *Bio-Remediation*

For bio-remediation, forest re-establishment & extreme situations where topsoil has been removed or badly damaged, incorporate 68 lb. per 1,000 ft<sup>2</sup> into the damaged soil. Re-apply 60 to 90 days later at a rate of 68 lb. per 1,000 ft<sup>2</sup>

### *Preparation for Gardens, Landscapes and Agricultural Crop Land*

GeoEarth is intended as a general soil builder for broadcast application and improving soil organic matter levels, cation exchange capacity and enhancing and diversifying soil biological activity levels as shown in the microbial diversity index analysis.

### *Soil Preparation*

- Light, High Sandy Soil:  
7 lb. per 100 square feet of bed
- Medium, Clay Loam Soil  
5 lb. per 100 square feet of bed
- Heavy, Silty, Clay Loam  
3 lb. per 100 square feet of bed

### Specifications

Organic Matter .....	50%
Carbon:Nitrogen(C:N) .....	9:1
Bulk Density (lb/ft <sup>3</sup> ) .....	35
Moisture Content .....	5%
Particle Size.....	< 3.5 mm

### Non-Plant Food Ingredients

Humic Acid.....	≥7%
Biochar.....	≥10%
Seaweed (Ascophylum Nodosum).....	≥2%
Arbuscular Mycorrhizae.....	2.4 propagules/g
Beneficial Bacteria.....	1x10 <sup>8</sup> CFU/g

### Guaranteed Analysis

Total Nitrogen (N) .....	2%
0.2% Ammoniacal Nitrogen	
0.2% Water Soluble Organic Nitrogen	
1.6% Water Insoluble Organic Nitrogen*	
Available Phosphate (P <sub>2</sub> O <sub>5</sub> ) .....	5%
Soluble Potash (K <sub>2</sub> O).....	3%
Calcium (Ca).....	5%
Sulfur (S).....	1%

Derived from composted turkey litter.

\*1.6% slowly available nitrogen from aerobically composted turkey litter.

(941)-371-9858  
(888)-802-3550

GeoEnvironmental  
1551 Global Ct.  
Sarasota, FL 34240